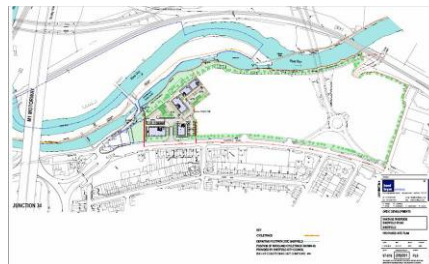


Project Profile

Ordic Investments Ltd | Vantage Riverside

Client	Ordic Investments Ltd
Client Sector	Offices Warehouse Industry
Project Value	£8m
Services Provided	Development Consultant Funding Advice Application Cost Consultant
Project Size	6.7 hectare
Architect	
Contractors	



This £8 million scheme started redevelopment of an unsightly and derelict brownfield site, which currently creates an eyesore and reflects a poor image of the city, transforming the site in to an attractive and accessible base for a number of potential businesses, drawing around 160 jobs to the area. Work commenced on site in April 2006 and will be completed by September 2007.

The 6.7 hectare (16.5 acres) Vantage Riverside site lies at the Sheffield/Rotherham gateway at Junction 34, south of the M1, one of the most prominent sites of Sheffield and Rotherham for visitors to the area. The site is to be reclaimed and transformed into a new high quality business site, providing initially 32,000 square foot of office accommodation comprising 5 units between 4,000 sq ft and 10,000 sq ft in size. The 5 units will be constructed in phase 1, the remainder of the site will eventually accommodate a mix of Office, Warehouse and Industrial Units.